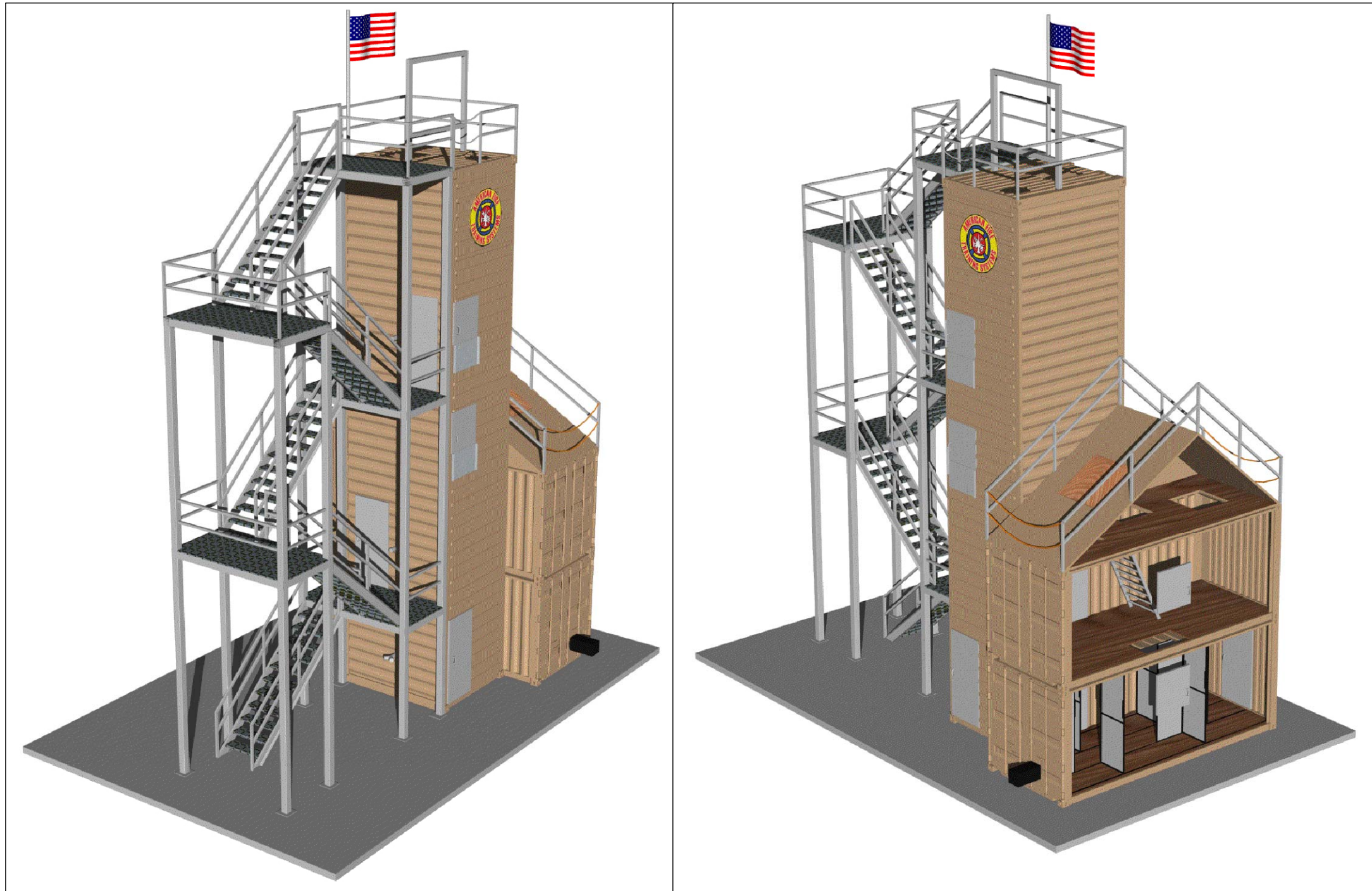


PROPOSAL FOR TACTICAL TRAINING PROP ADAMS COUNTY ESA - GETTYSBURG, PA.



UNIT SPECIFICATIONS

- 1 40' H.C. CONTAINER
- 2 20' H.C. CONTAINER
- 5 TRAINING LEVELS
- 1 RAPPEL STATION
- 4 STD. DOORS
- 1 DENVER DRILL WINDOW
- 2 STD. WINDOWS
- 2 LADDER GUIDES
- 2 ROOF CHOP-OUTS
- 1 ATTIC SIM.
- 1 RAPPEL STATION
- 2 RAPPEL ACCESS HATCHES
- 2 HALF LANDINGS W/ROUND HATCHES
- 1 FULL LANDING
- 1 OSHA LADDER
- 1 40' EXTERNAL STAIRCASE
- 1 DROP TUBE W/HATCH
- 1 (3) LEVEL STANDPIPE
- 1 DROP-DOWN LADDER
- 1 (2) TIER MAZE

TRAINING AREA TOTAL
= APPROX. 660 SQ.FT.



THIS DRAWING AND ANY INFORMATION OR DESCRIPTIVE MATTER SET OUT HEREON, ARE THE CONFIDENTIAL AND COPYRIGHT PROPERTY OF A WAREHOUSE ON WHEELS AND MUST BE HELD IN THE STRICTEST CONFIDENCE BY THE RECIPIENT AND MUST NOT BE COPIED, LOANED OR DISCLOSED TO ANY THIRD PARTY, OR USED FOR ANY OTHER PURPOSE WITHOUT PRIOR WRITTEN CONSENT FROM A WAREHOUSE ON WHEELS.

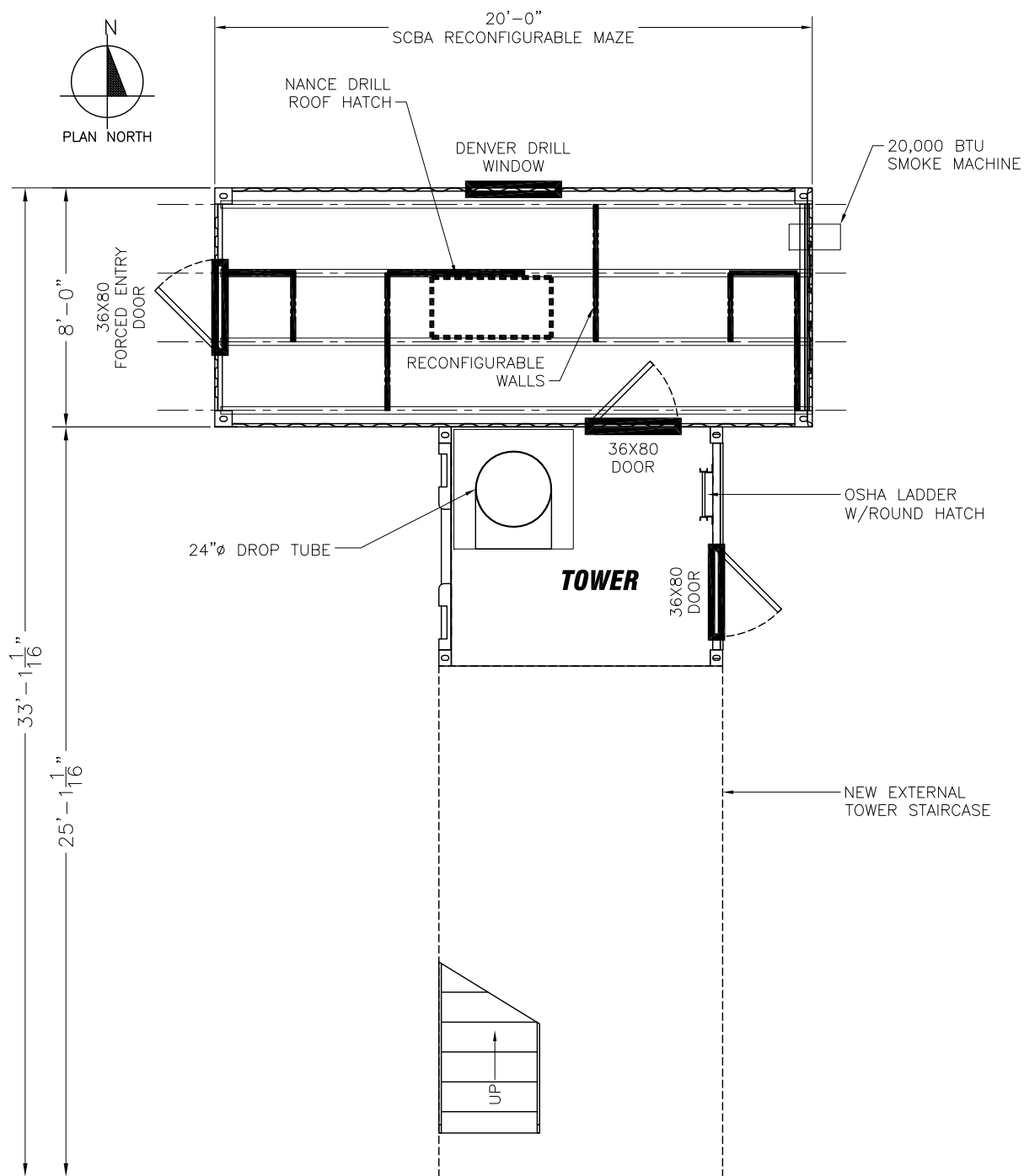
AMERICAN FIRE TRAINING SYSTEMS, INC.
12315 SOUTH NEW AVE., POB #39
LEMONT, ILLINOIS 60439
(630) 257-0112



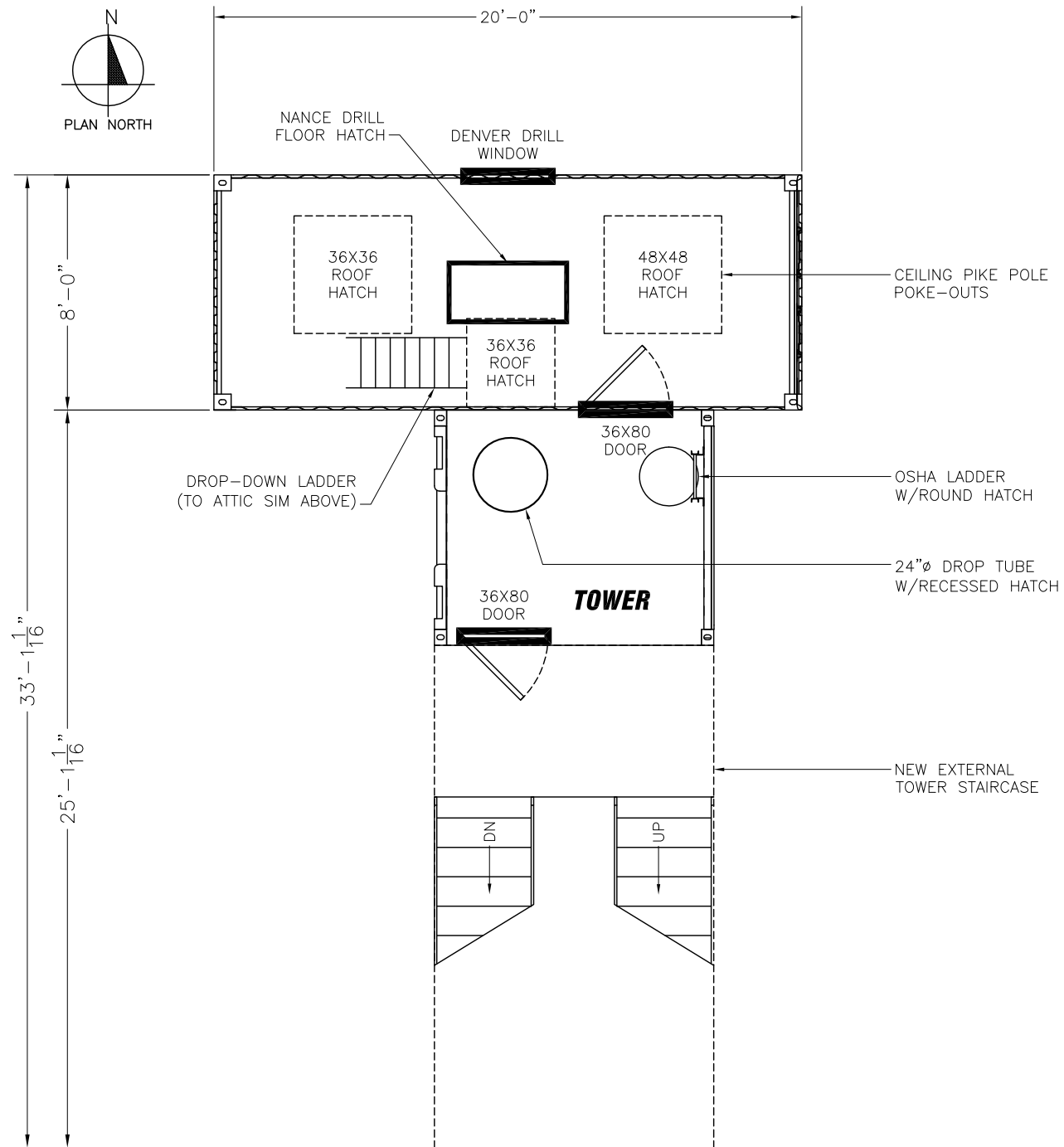
PROPOSAL FOR TACTICAL TRAINING PROP
ADAMS COUNTY ESA - GETTYSBURG, PA.

DRAWN BY: PRD
REV: -
DATE: 08-01-13
SCALE: NONE
DWG NO.

00



FIRST FLOOR PLAN



SECOND FLOOR PLAN

THIS DRAWING AND ANY INFORMATION OR DESCRIPTIVE MATTER SET OUT HEREON, ARE THE CONFIDENTIAL AND COPYRIGHT PROPERTY OF A WAREHOUSE ON WHEELS AND MUST BE HELD IN THE STRICTEST CONFIDENCE BY THE RECIPIENT AND MUST NOT BE COPIED, LOANED OR DISCLOSED TO ANY THIRD PARTY, OR USED FOR ANY OTHER PURPOSE WITHOUT PRIOR WRITTEN CONSENT FROM A WAREHOUSE ON WHEELS.

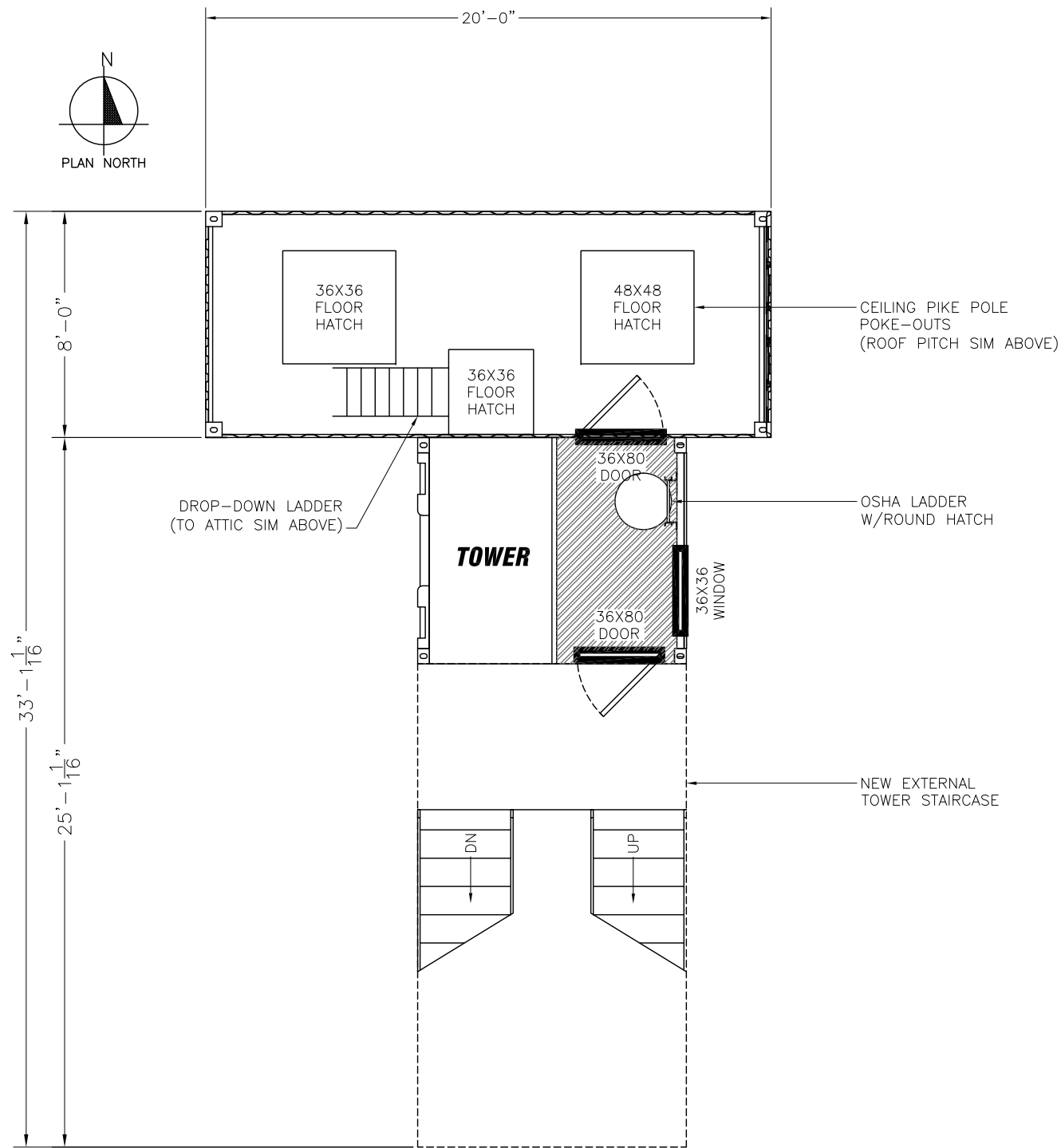
AMERICAN FIRE TRAINING SYSTEMS, INC.
12315 SOUTH NEW AVE., POB #39
LEMONT, ILLINOIS 60439
(630) 257-0112



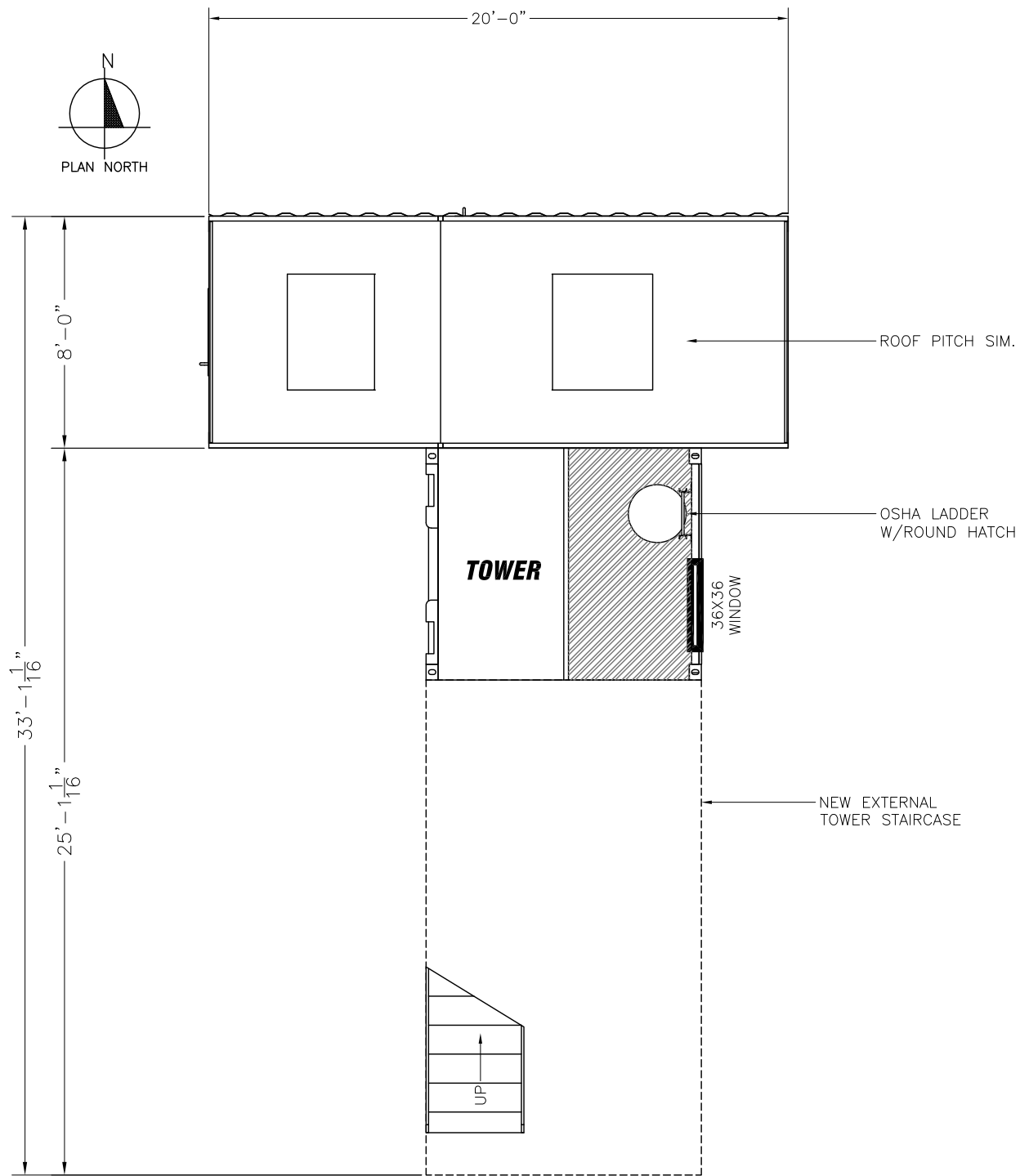
PROPOSAL FOR TACTICAL TRAINING PROP
ADAMS COUNTY ESA - GETTYSBURG, PA.

DRAWN BY: PRD
REV: -
DATE: 08-01-13
SCALE: NONE
DWG NO.

01



THIRD FLOOR PLAN



FOURTH FLOOR PLAN

THIS DRAWING AND ANY INFORMATION OR DESCRIPTIVE MATTER SET OUT HEREON, ARE THE CONFIDENTIAL AND COPYRIGHT PROPERTY OF A WAREHOUSE ON WHEELS AND MUST BE HELD IN THE STRICTEST CONFIDENCE BY THE RECIPIENT AND MUST NOT BE COPIED, LOANED OR DISCLOSED TO ANY THIRD PARTY, OR USED FOR ANY OTHER PURPOSE WITHOUT PRIOR WRITTEN CONSENT FROM A WAREHOUSE ON WHEELS.

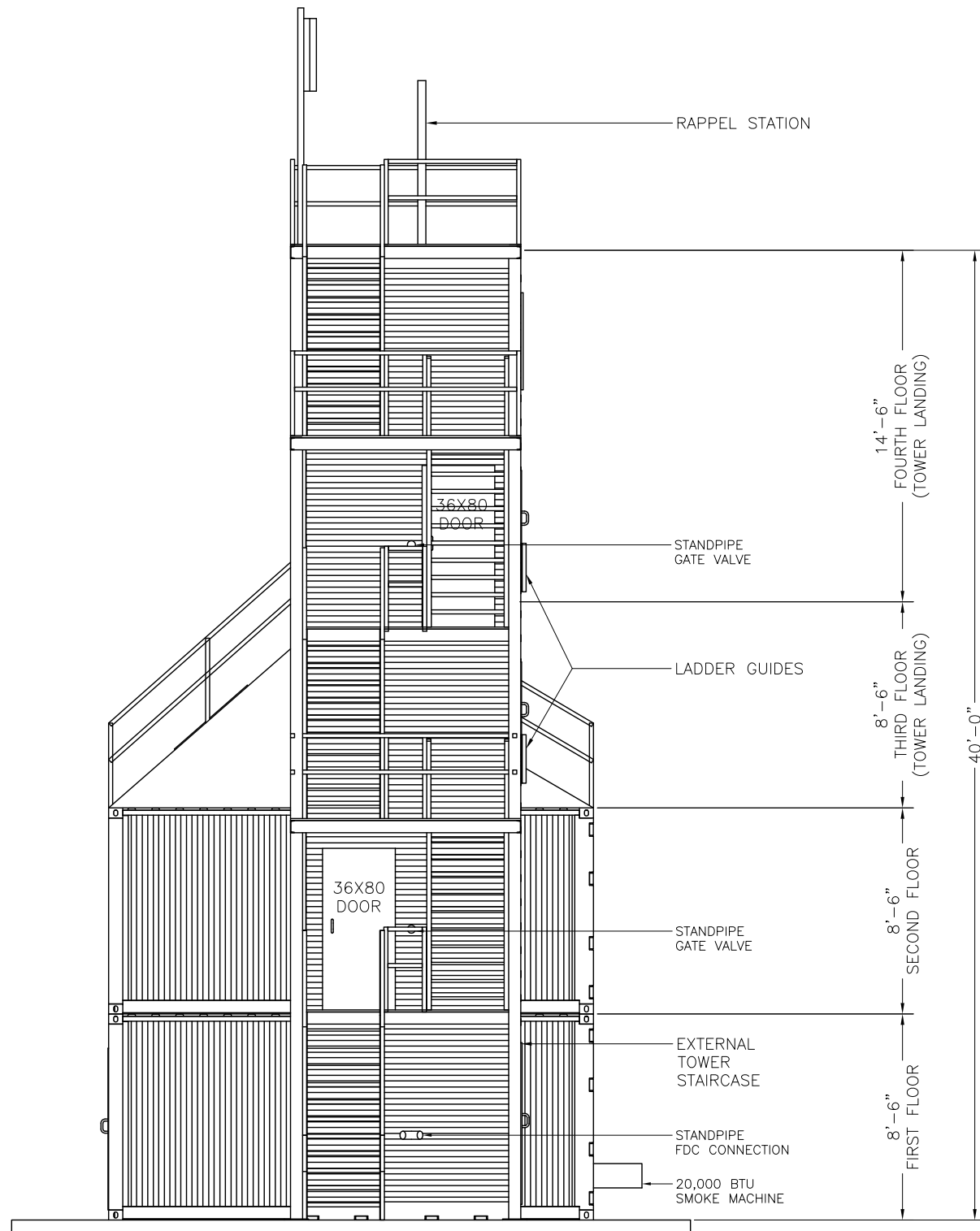
AMERICAN FIRE TRAINING SYSTEMS, INC.
12315 SOUTH NEW AVE., POB #39
LEMONT, ILLINOIS 60439
(630) 257-0112



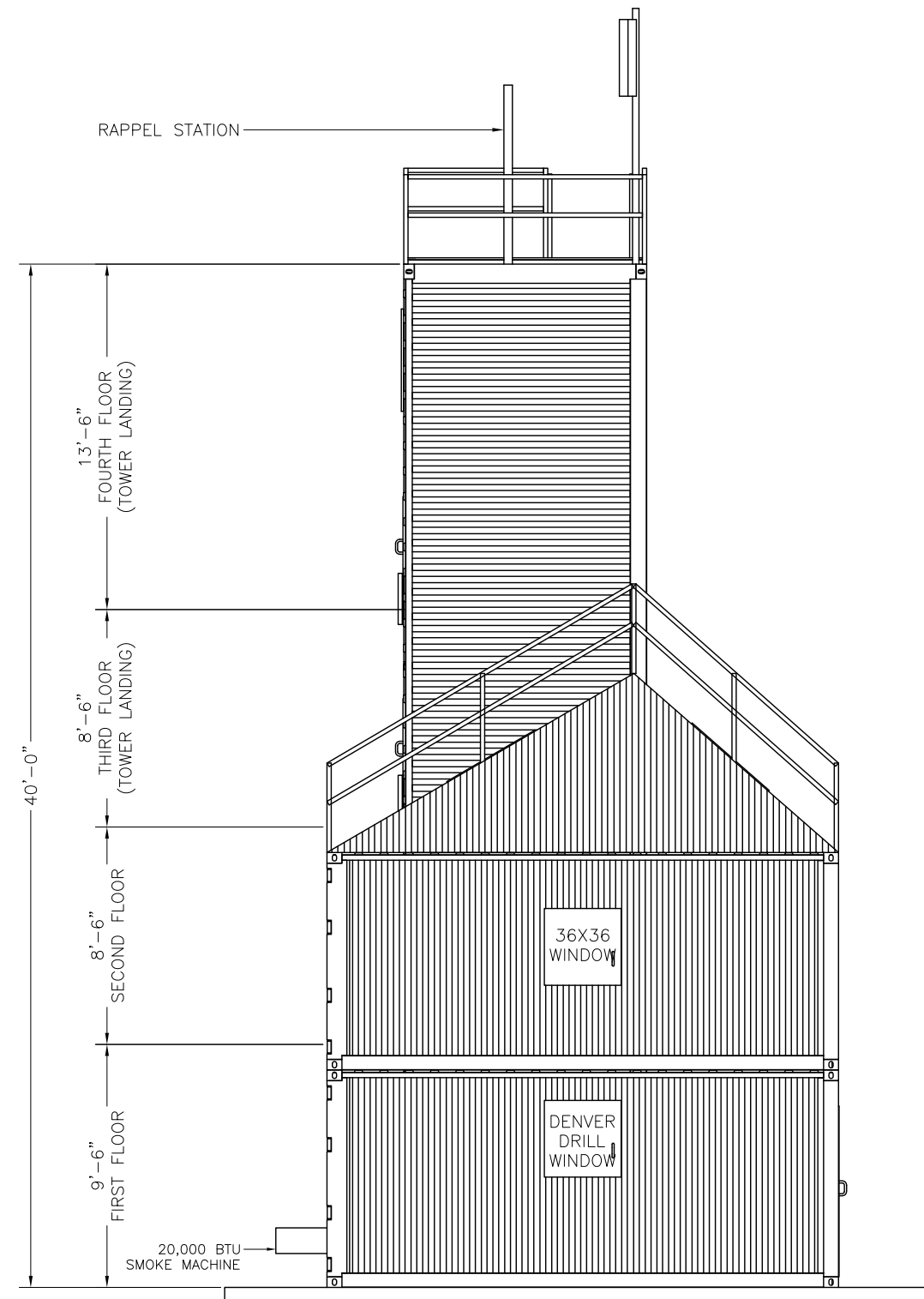
PROPOSAL FOR TACTICAL TRAINING PROP
ADAMS COUNTY ESA - GETTYSBURG, PA.

DRAWN BY: PRD
REV: -
DATE: 08-01-13
SCALE: NONE
DWG NO.

02



PLAN NORTH ELEVATION



PLAN SOUTH ELEVATION

THIS DRAWING AND ANY INFORMATION OR DESCRIPTIVE MATTER SET OUT HEREON, ARE THE CONFIDENTIAL AND COPYRIGHT PROPERTY OF A WAREHOUSE ON WHEELS AND MUST BE HELD IN THE STRICTEST CONFIDENCE BY THE RECIPIENT AND MUST NOT BE COPIED, LOANED OR DISCLOSED TO ANY THIRD PARTY, OR USED FOR ANY OTHER PURPOSE WITHOUT PRIOR WRITTEN CONSENT FROM A WAREHOUSE ON WHEELS.

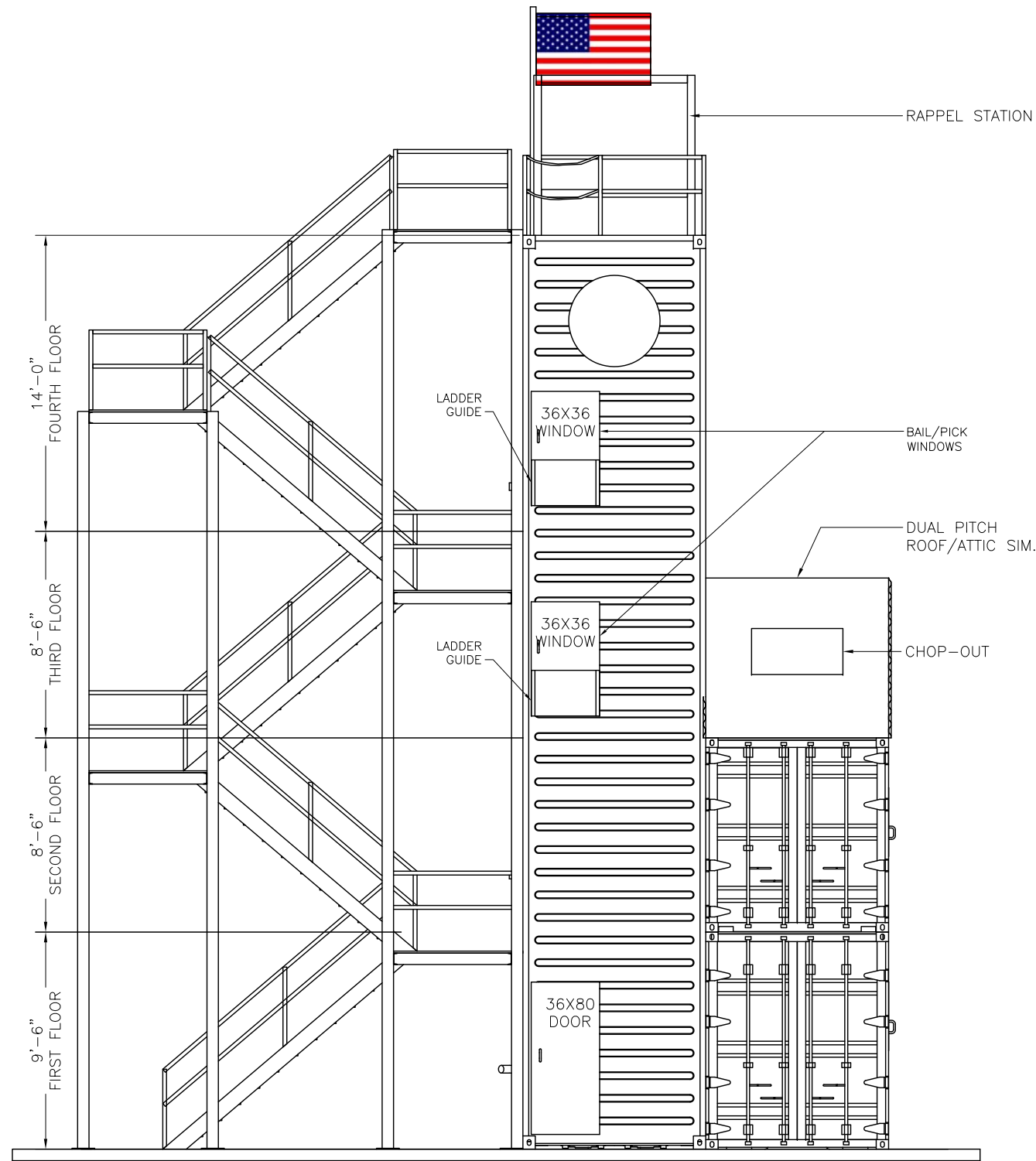
AMERICAN FIRE TRAINING SYSTEMS, INC.
 12315 SOUTH NEW AVE., POB #39
 LEMONT, ILLINOIS 60439
 (630) 257-0112



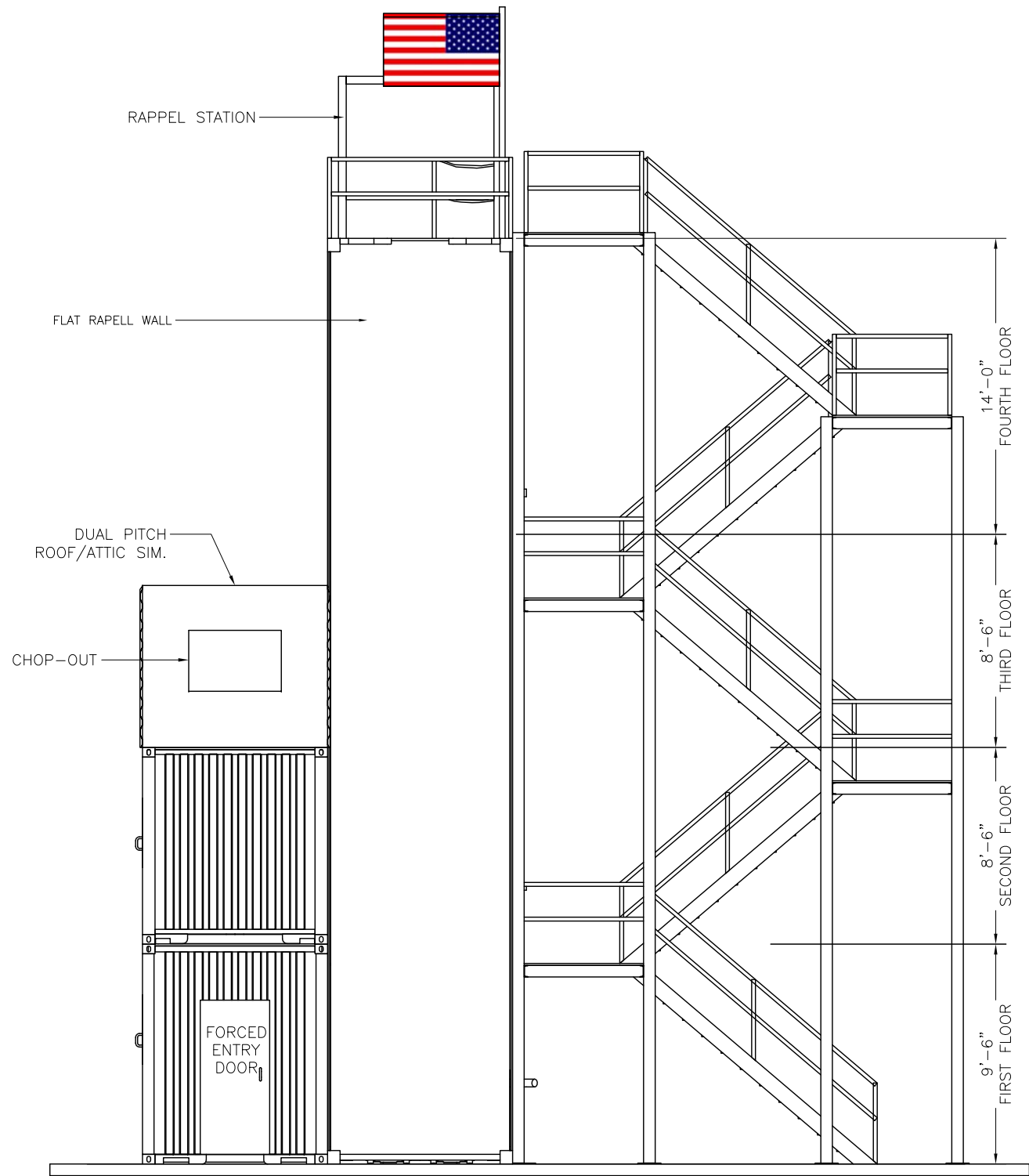
PROPOSAL FOR TACTICAL TRAINING PROP
ADAMS COUNTY ESA - GETTYSBURG, PA.

DRAWN BY: PRD
 REV: -
 DATE: 08-01-13
 SCALE: NONE
 DWG NO.

03



PLAN WEST ELEVATION



PLAN EAST ELEVATION

THIS DRAWING AND ANY INFORMATION OR DESCRIPTIVE MATTER SET OUT HEREON, ARE THE CONFIDENTIAL AND COPYRIGHT PROPERTY OF A WAREHOUSE ON WHEELS AND MUST BE HELD IN THE STRICTEST CONFIDENCE BY THE RECIPIENT AND MUST NOT BE COPIED, LOANED OR DISCLOSED TO ANY THIRD PARTY, OR USED FOR ANY OTHER PURPOSE WITHOUT PRIOR WRITTEN CONSENT FROM A WAREHOUSE ON WHEELS.

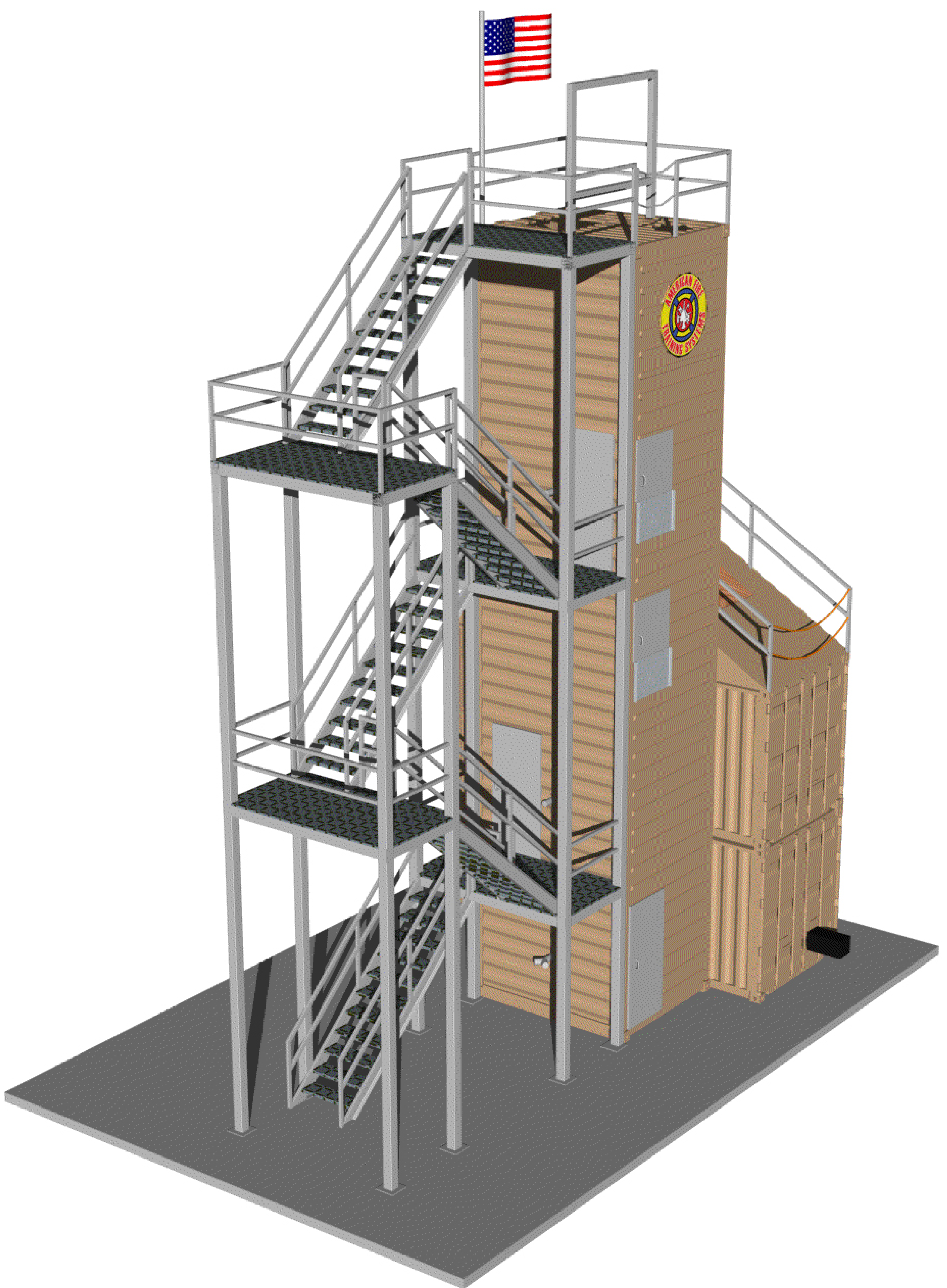
AMERICAN FIRE TRAINING SYSTEMS, INC.
 12315 SOUTH NEW AVE., POB #39
 LEMONT, ILLINOIS 60439
 (630) 257-0112



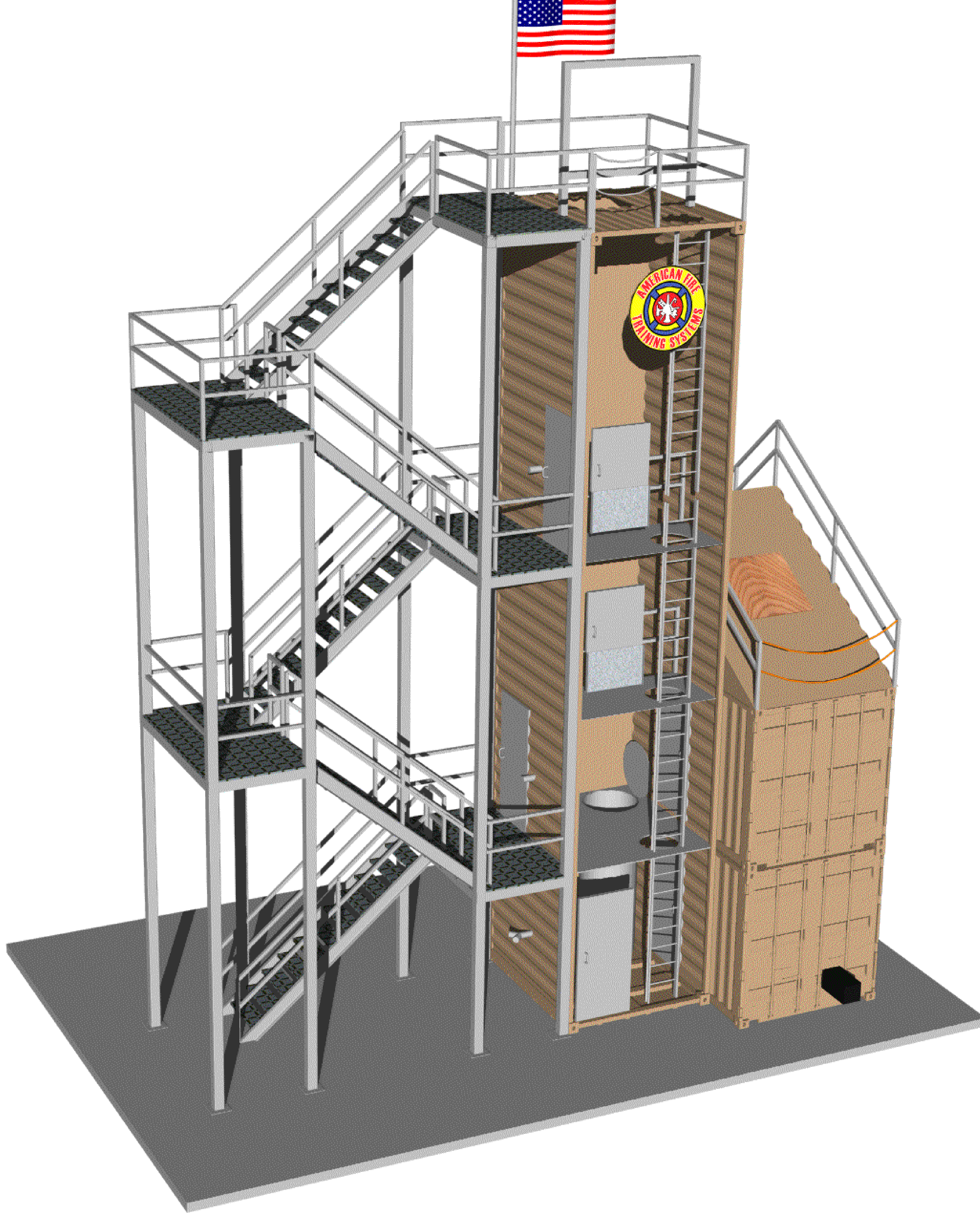
**PROPOSAL FOR TACTICAL TRAINING PROP
 ADAMS COUNTY ESA - GETTYSBURG, PA.**

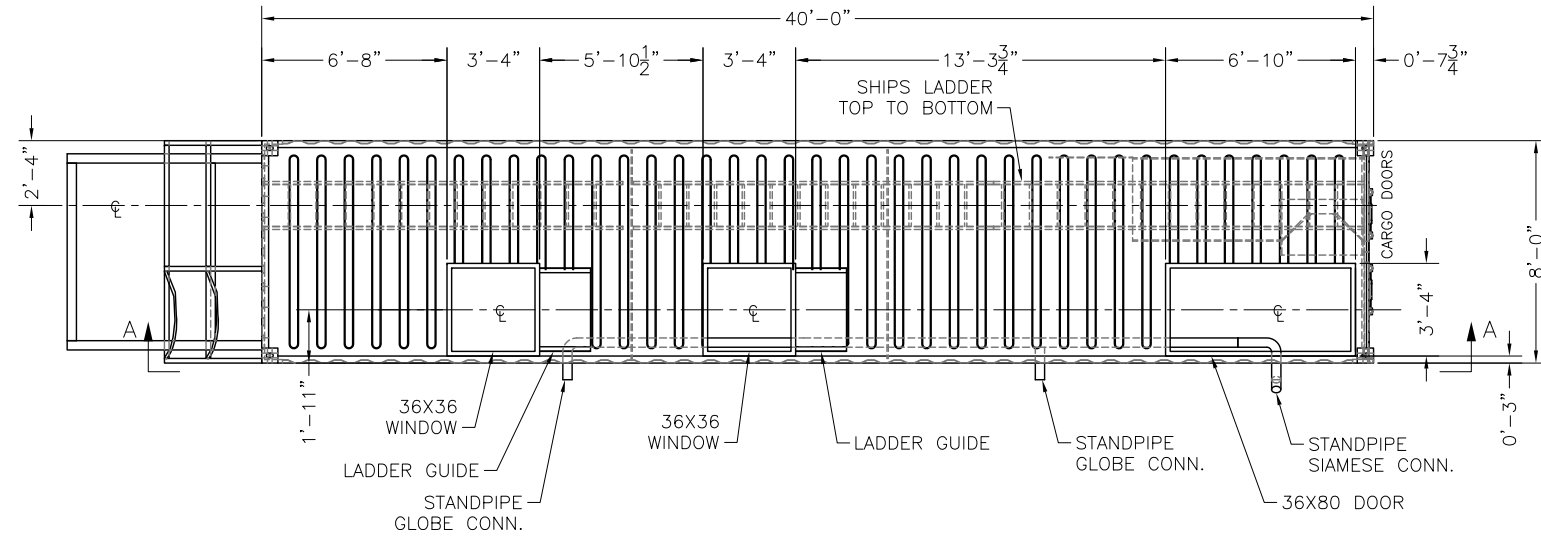
DRAWN BY: PRD
 REV: -
 DATE: 08-01-13
 SCALE: NONE
 DWG NO.

04

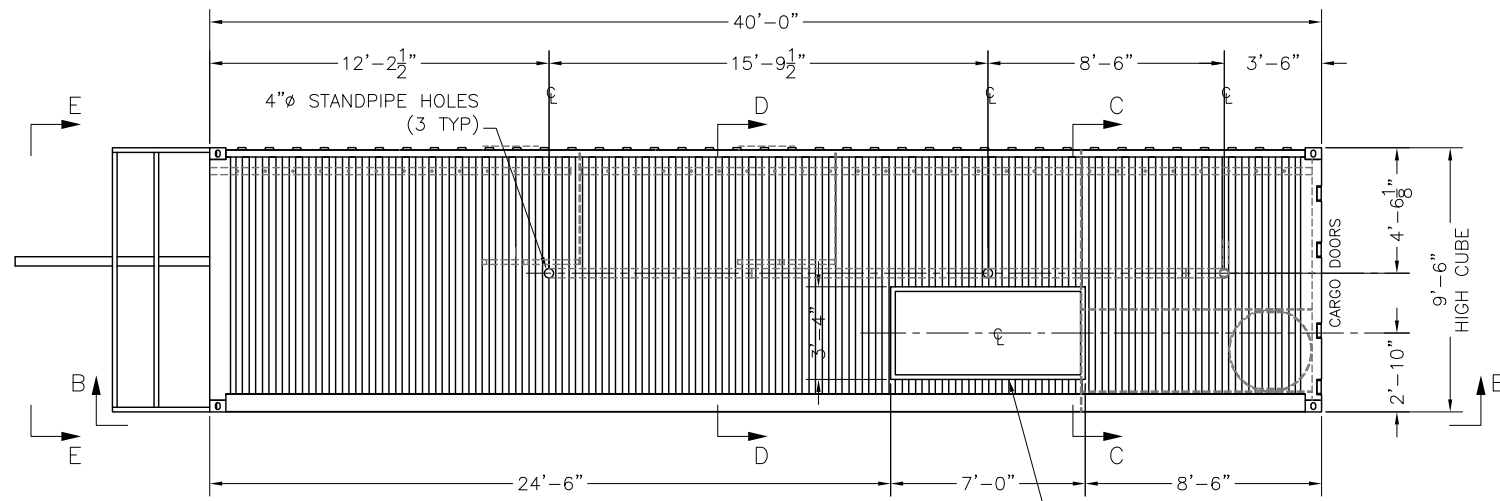
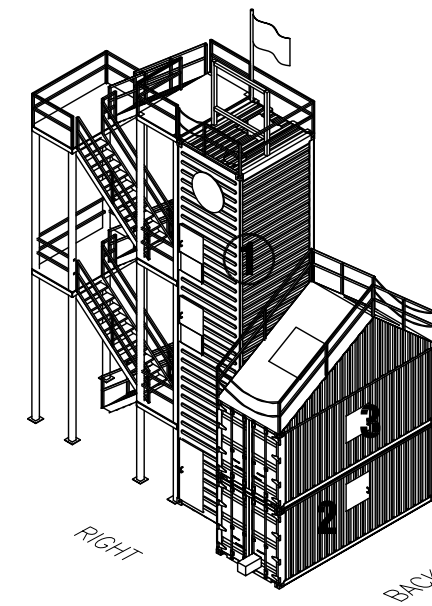




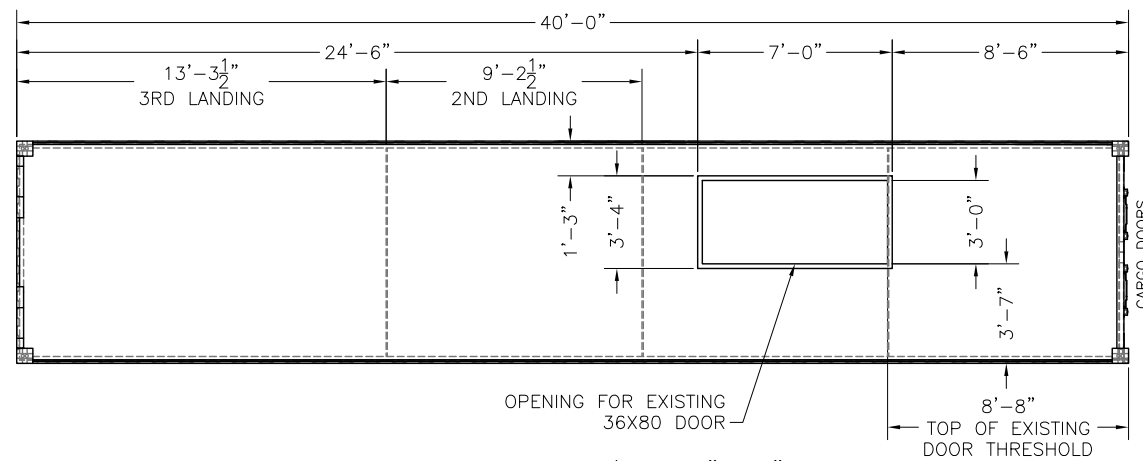
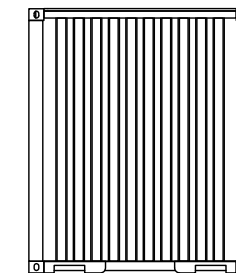
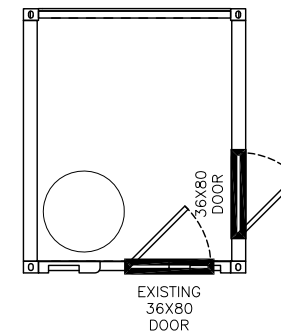




CONTAINER 1 TOP VIEW
CONTAINER 1 OF 3

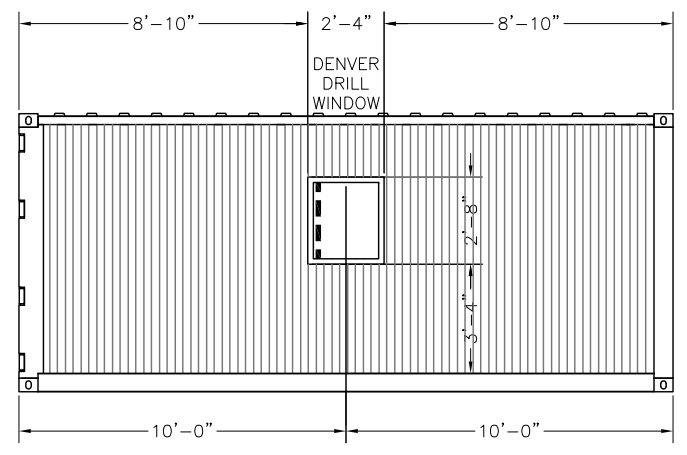
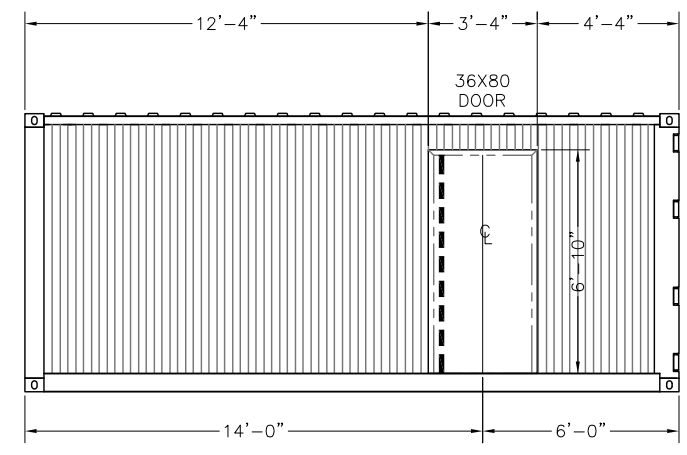
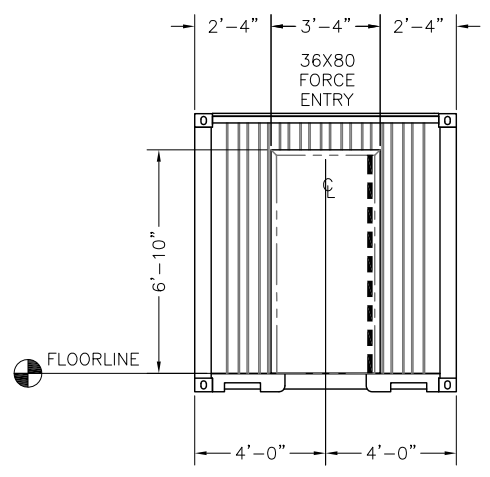
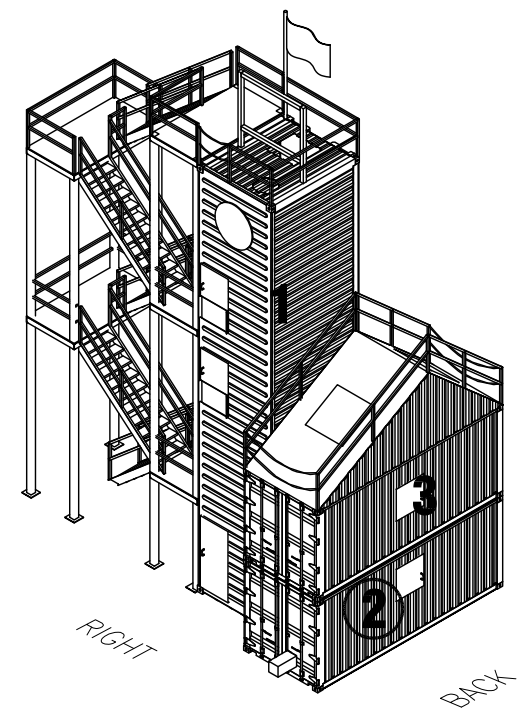
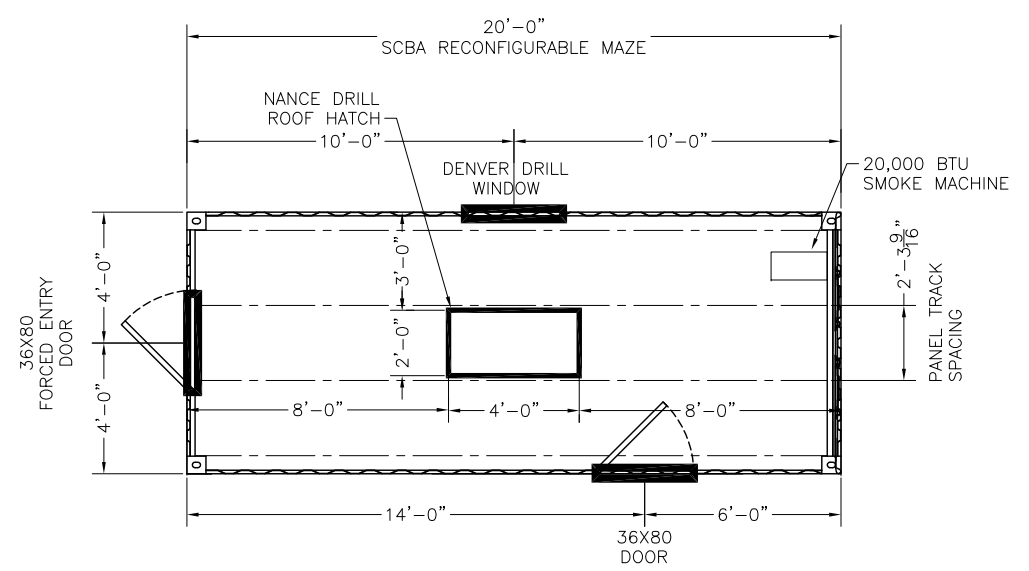


RIGHT ELEVATION / VIEW "A-A"
CONTAINER 1 OF 3

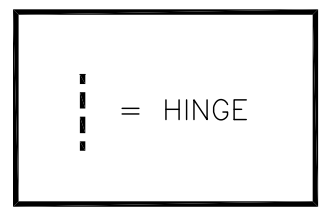


CONTAINER BOTTOM / VIEW "B-B"
CONTAINER 1 OF 3

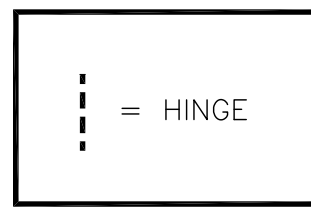
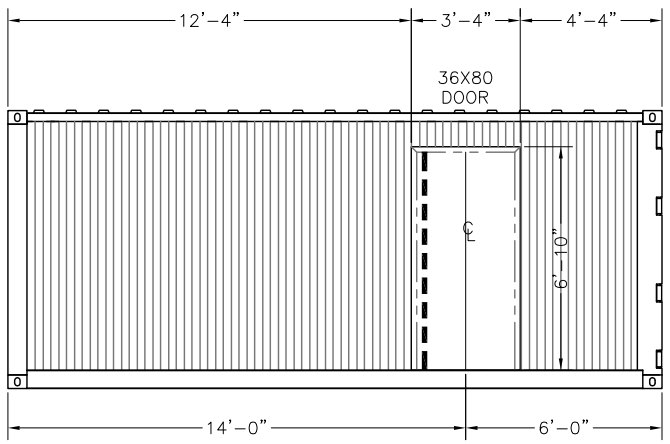
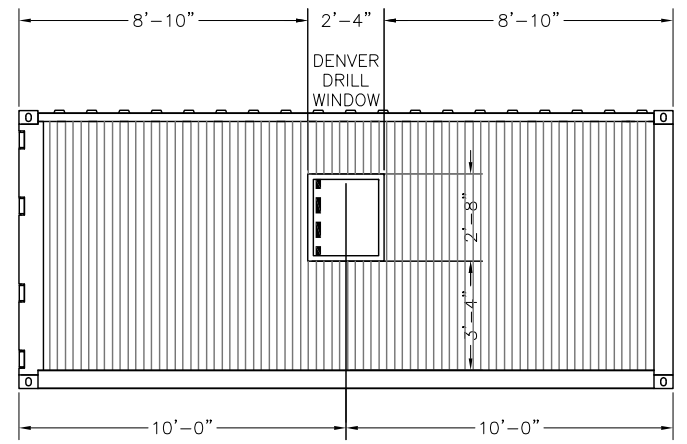
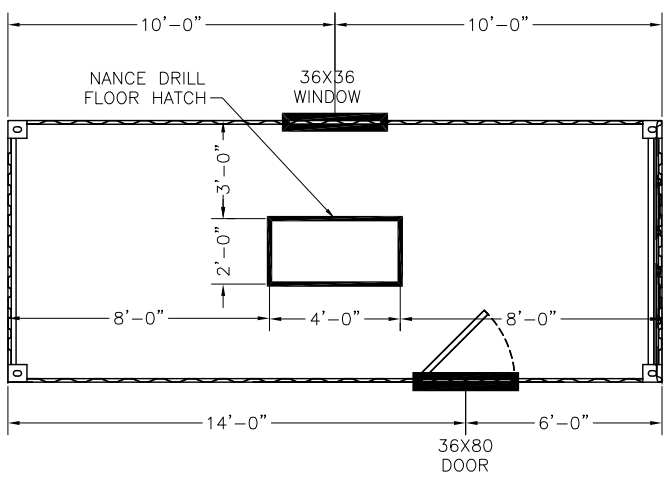
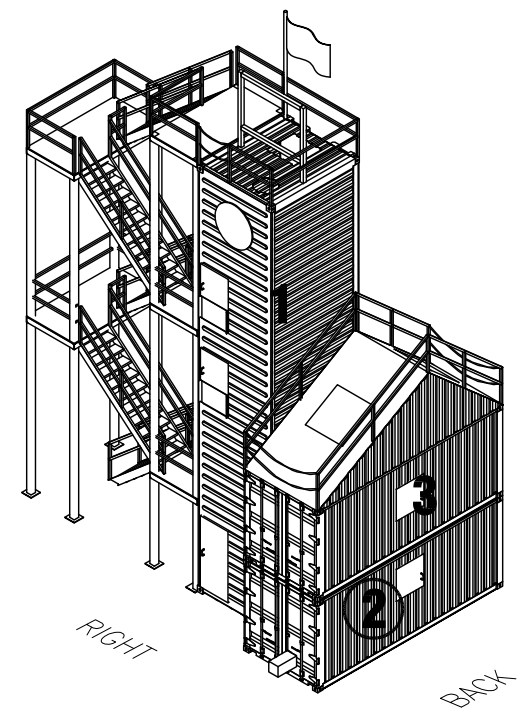
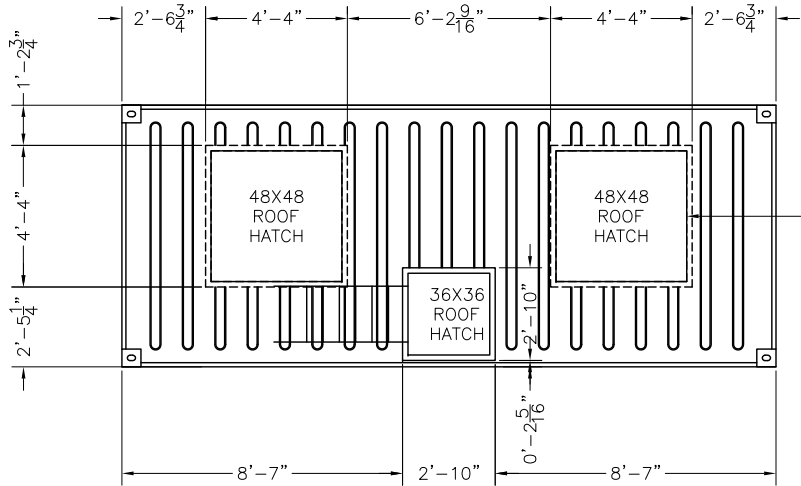
Itemref	Quantity	Title/Name, designation, material, dimension etc	Article No./Reference		
Designed by R.G.	Checked by	Approved by - date	File name P434	Date 01-08-15	Scale NONE
A.F.T.S.			P434 - GETTYSBURG PA		
			CONTAINER 1	Edition -	Sheet 1/4



ELEVATION VIEW "D-D"
CONTAINER 1 OF 8



Itemref	Quantity	Title/Name, designation, material, dimension etc	Article No./Reference		
Designed by R.G.	Checked by	Approved by - date	File name P434	Date 01-08-15	Scale NONE
A.F.T.S.			P434 - GETTYSBURG PA		
			CONTAINER 2	Edition -	Sheet 1/4



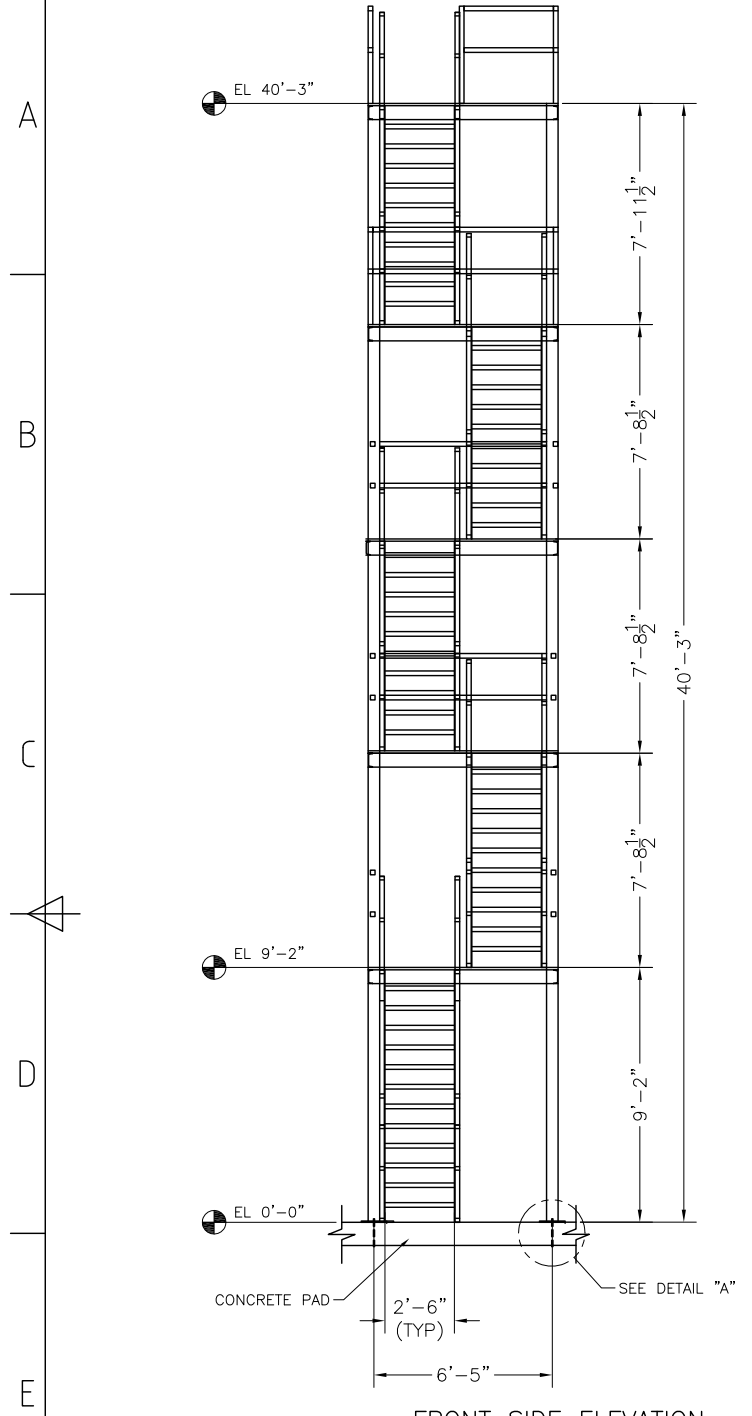
Itemref	Quantity	Title/Name, designation, material, dimension etc			Article No./Reference	
Designed by R.G.	Checked by	Approved by - date	File name P434	Date 01-08-15	Scale NONE	
A.F.T.S.			P434 - GETTYSBURG PA			
			CONTAINER 2	Edition -	Sheet 1/4	

1 2 3 4 5 6 7 8

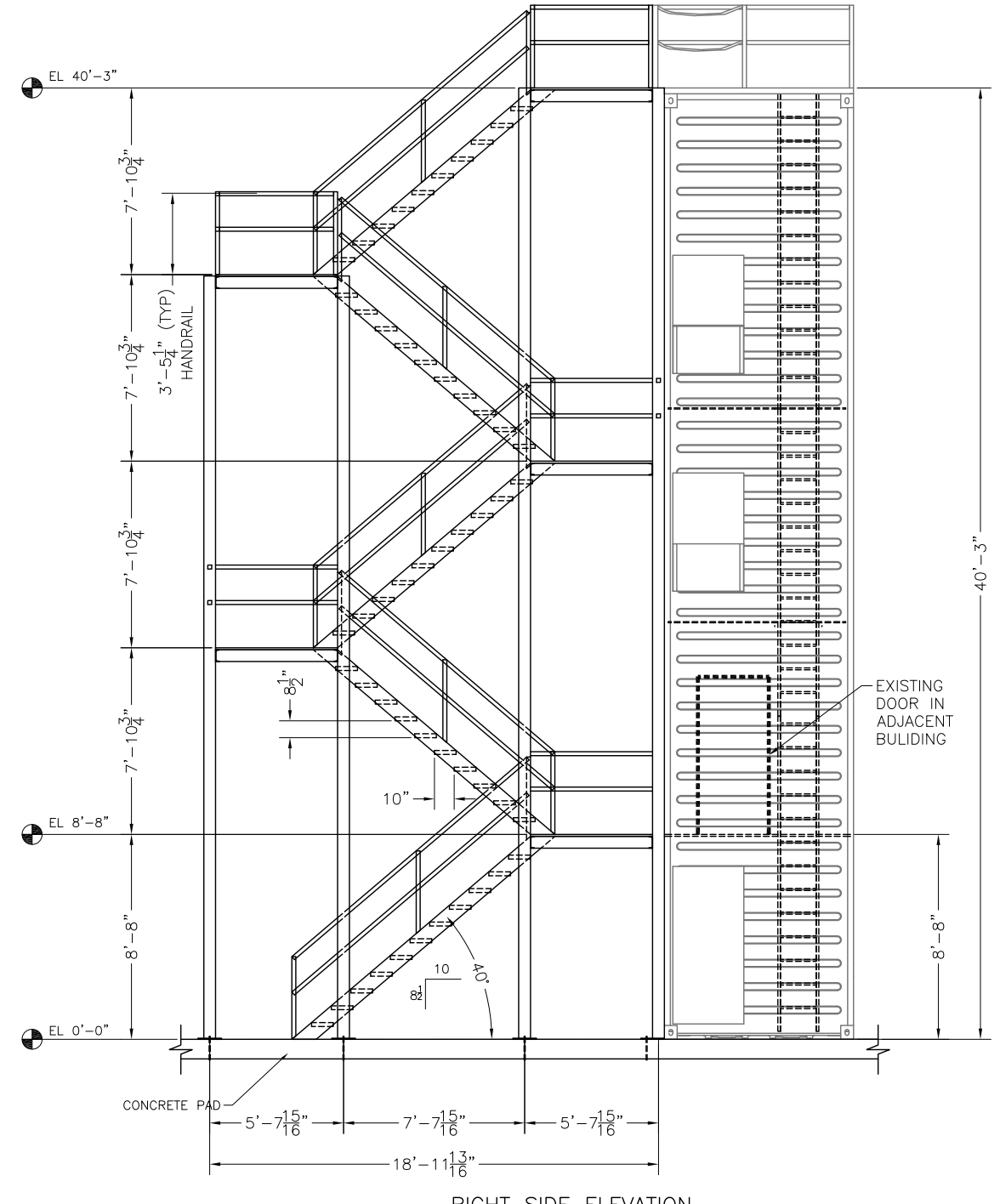
A B C D E F

RIGHT BACK

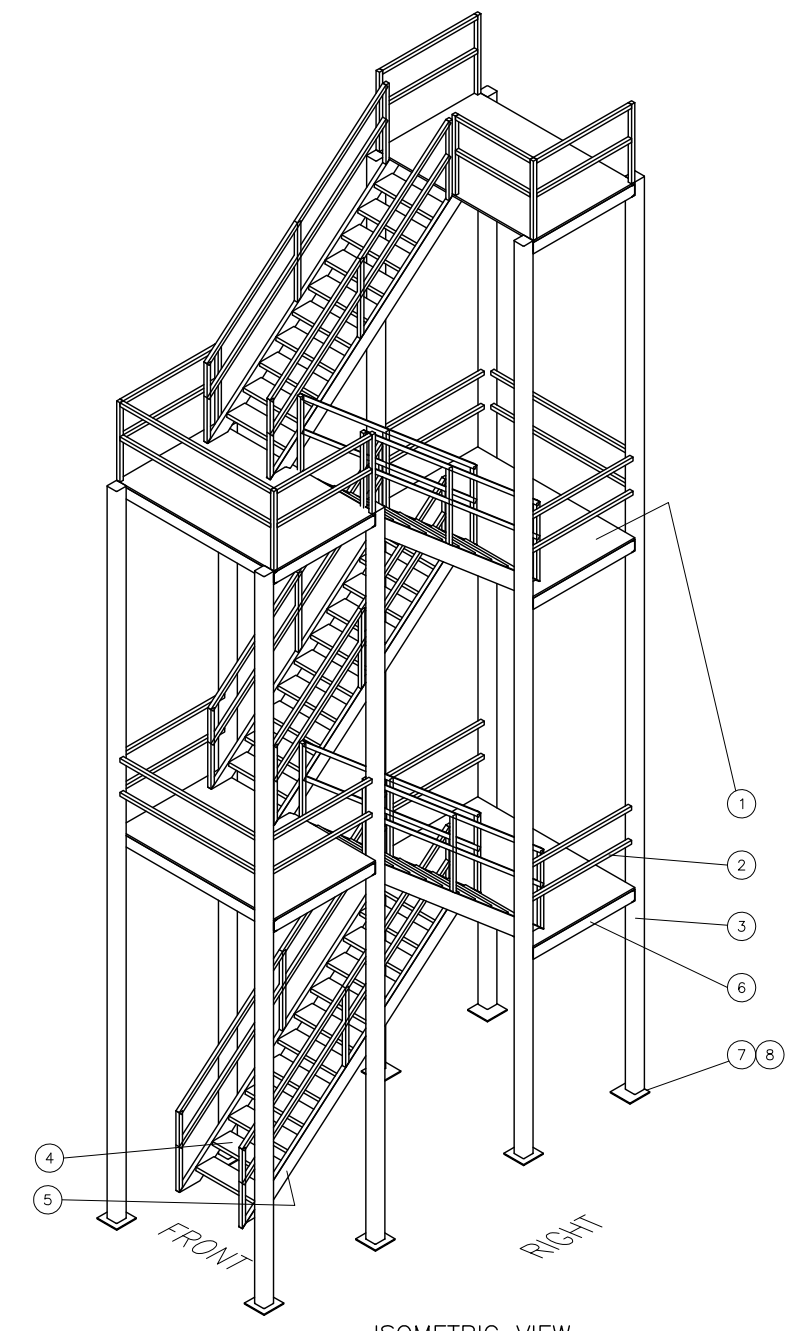
1 2 3 4 5 6 7 8



FRONT SIDE ELEVATION
SCALE: X1

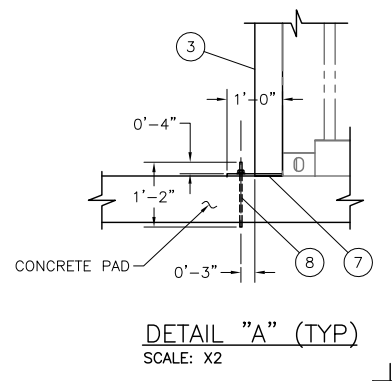


RIGHT SIDE ELEVATION
SCALE: X1



ISOMETRIC VIEW
SCALE: NONE

BILL OF MATERIALS		
ITEM#	DESCRIPTION	QTY.
1	BAR GRATING	250 SQ. FT.
2	2X2X1/8 SQ. TUBE	430 LINEAR FT.
3	5X5X3/8 SQ. TUBE	288 LINEAR FT.
4	11X36X1 TREADS	47 PCS.
5	10" CHANNEL	116 LINEAR FT.
6	6" CHANNEL	140 LINEAR FT.
7	12X12X1/2" STEEL PLATE	8 PCS.
8	12X3/4" THREADED ROD	8 PCS.

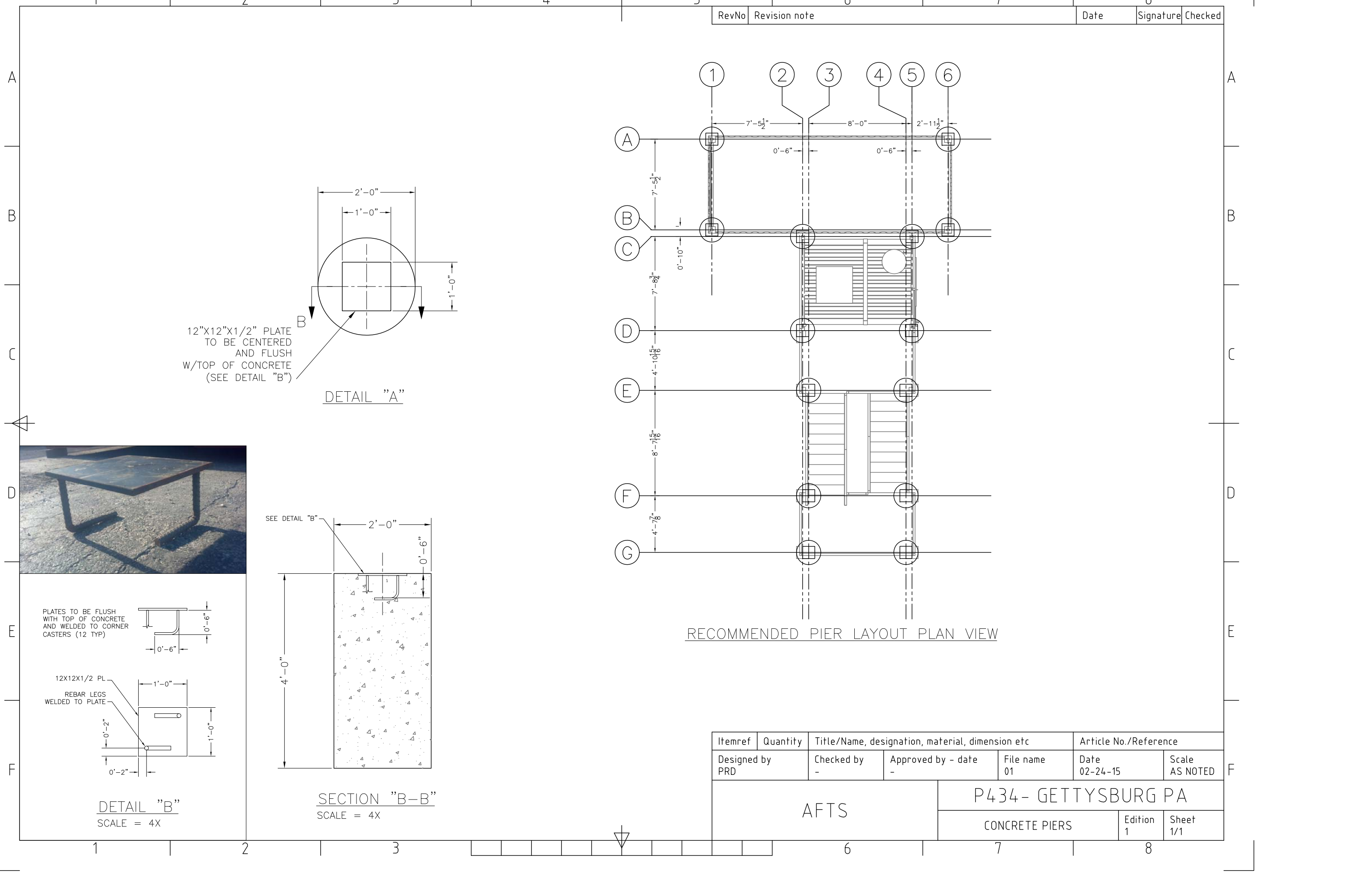


DETAIL "A" (TYP)
SCALE: X2

Q.C. SIGN OFF _____

Itemref	Quantity	Title/Name, designation, material, dimension etc	Article No./Reference		
Designed by R.G.	Checked by -	Approved by - date -	File name P434	Date 01-08-15	Scale AS NOTED
AFTS			P434 - GETTYSBURG PA		
			STAIR TOWER	Edition 1	Sheet 1/1

RevNo	Revision note	Date	Signature	Checked
-------	---------------	------	-----------	---------

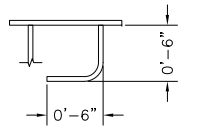


12"x12"x1/2" PLATE
TO BE CENTERED
AND FLUSH
W/TOP OF CONCRETE
(SEE DETAIL "B")

DETAIL "A"

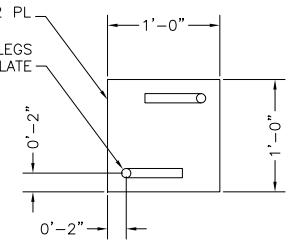


PLATES TO BE FLUSH
WITH TOP OF CONCRETE
AND WELDED TO CORNER
CASTERS (12 TYP)



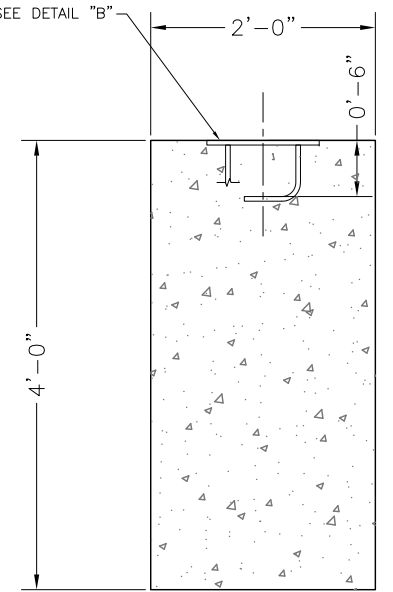
12X12X1/2 PL

REBAR LEGS
WELDED TO PLATE



DETAIL "B"
SCALE = 4X

SEE DETAIL "B"



SECTION "B-B"
SCALE = 4X

RECOMMENDED PIER LAYOUT PLAN VIEW

Itemref	Quantity	Title/Name, designation, material, dimension etc	Article No./Reference		
Designed by PRD	Checked by -	Approved by - date -	File name 01	Date 02-24-15	Scale AS NOTED
AFTS			P434- GETTYSBURG PA		
			CONCRETE PIERS	Edition 1	Sheet 1/1